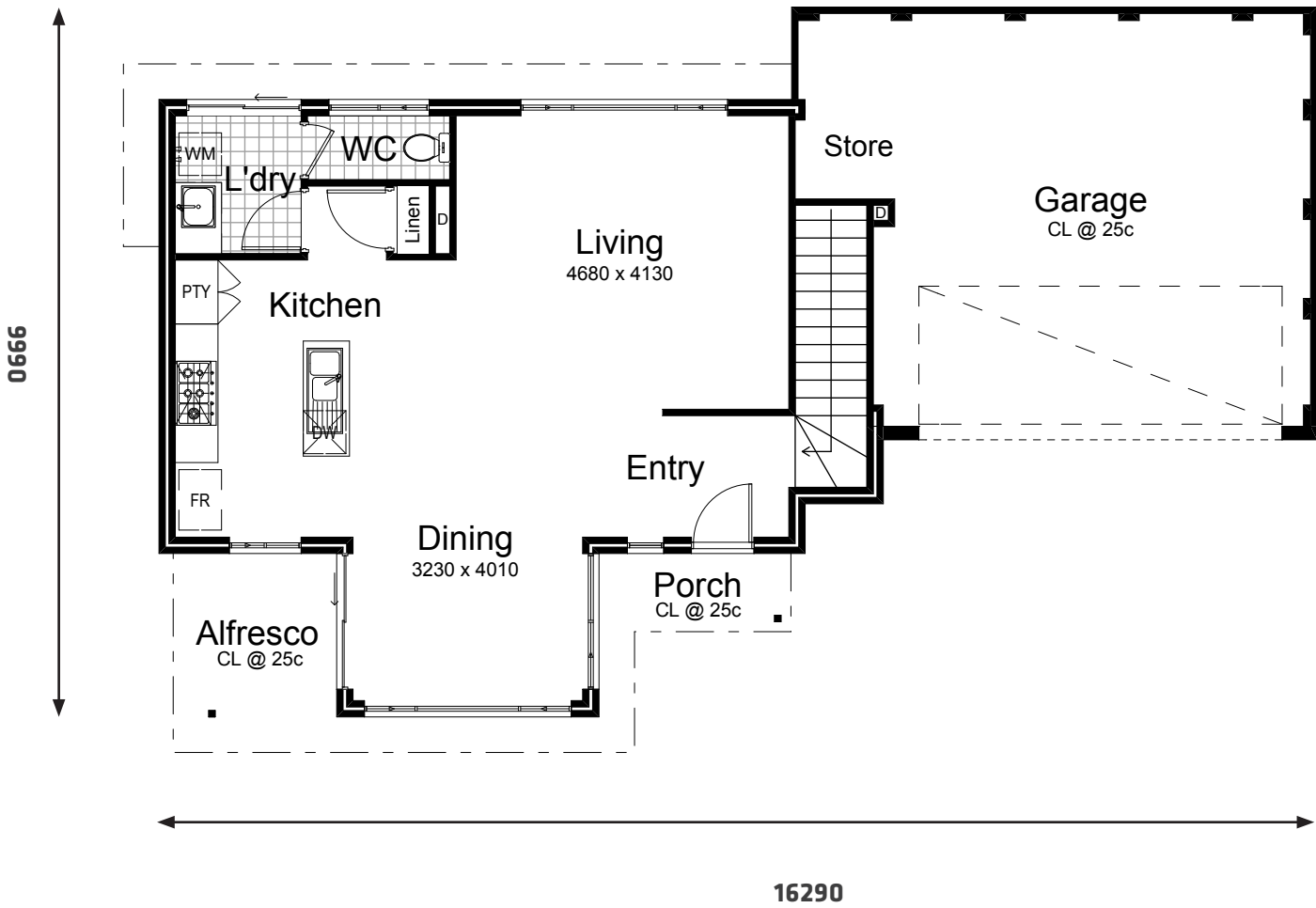
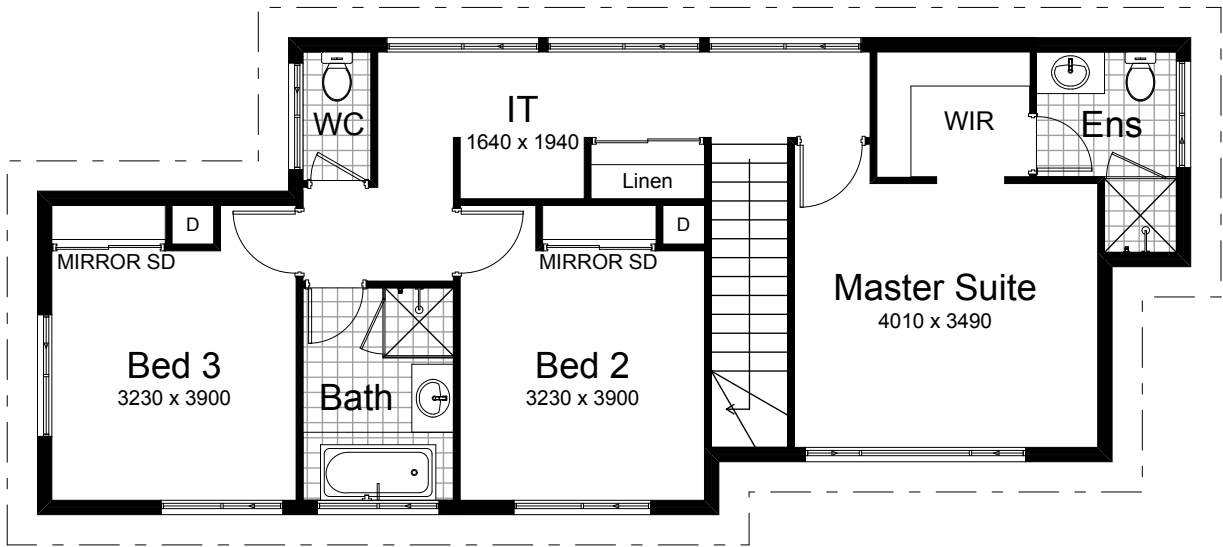


THE ALFRED DEVELOPMENTS 101



| | |
|----------------|-----------------------------|
| House - Ground | 70.621m ² |
| House - Upper | 82.437m ² |
| Garage | 41.037m ² |
| Alfresco | 6.440m ² |
| Portico | 2.970m ² |
| Total | 203.505m² |

Photos are for illustrative purposes only BRN 13521



innovative homes by
Scott Park
Managing Director

101

Developments