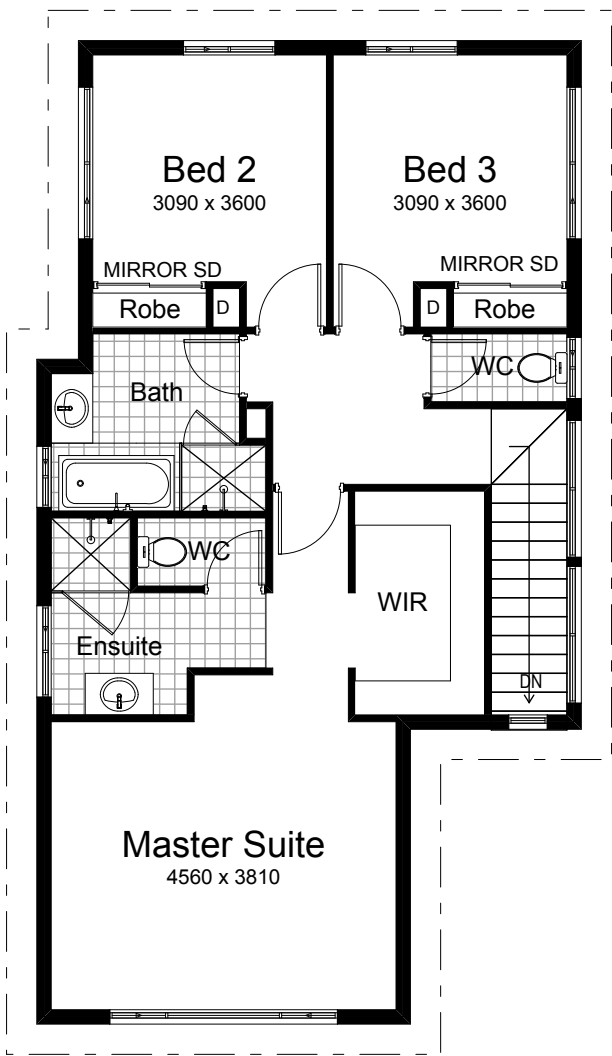
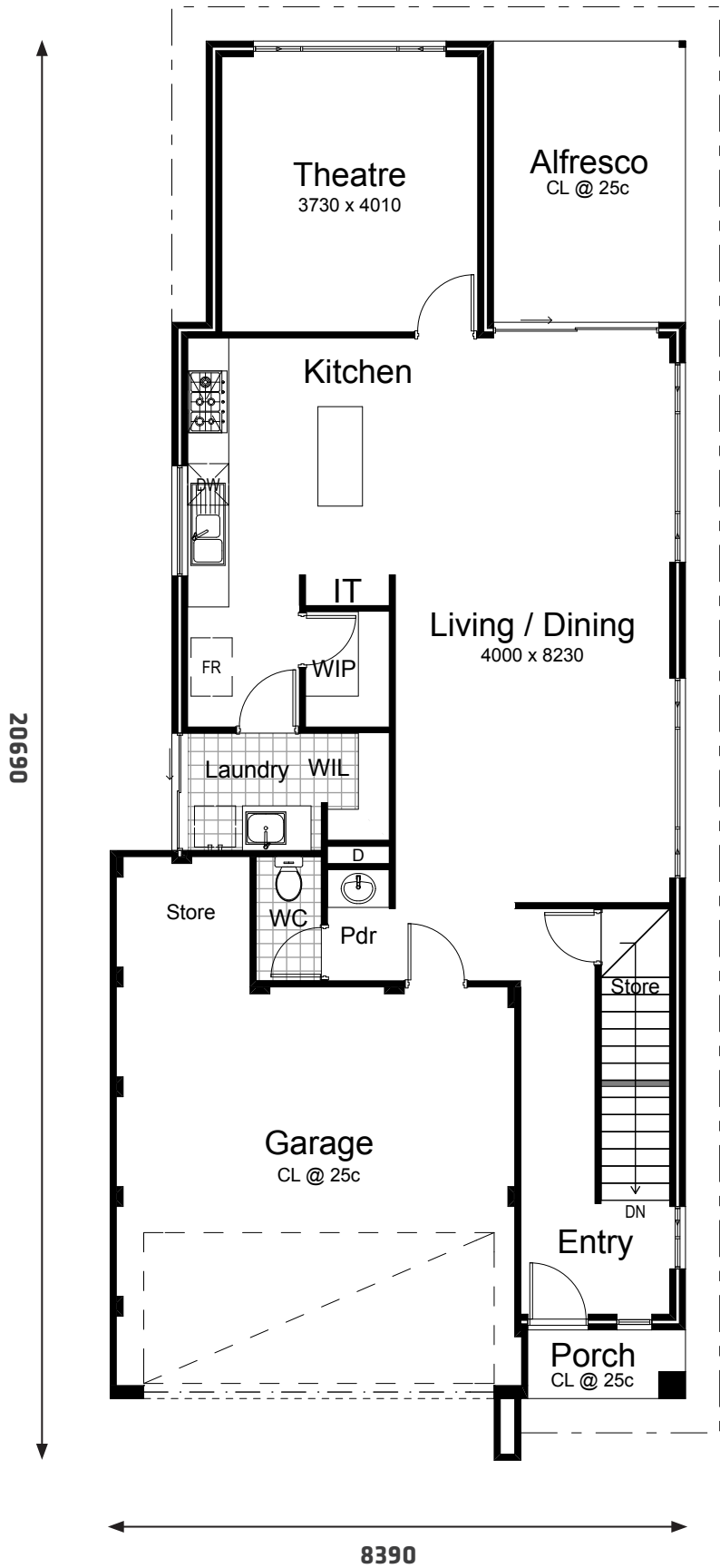


# THE BAYVIEW DEVELOPMENTS 101



|                |                             |
|----------------|-----------------------------|
| House - Ground | 100.041m <sup>2</sup>       |
| House - Upper  | 82.540m <sup>2</sup>        |
| Garage         | 39.898m <sup>2</sup>        |
| Alfresco       | 11.480m <sup>2</sup>        |
| Portico        | 2.300m <sup>2</sup>         |
| <b>Total</b>   | <b>236.259m<sup>2</sup></b> |

Photos are for illustrative purposes only BRN 13521



innovative homes by  
**Scott Park**  
Managing Director

**101**

Developments